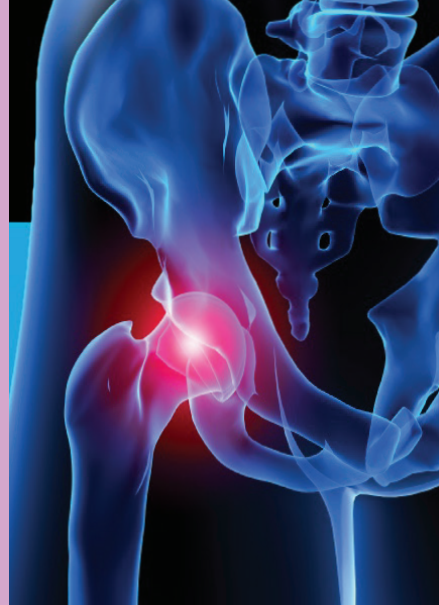


Contact for Registration

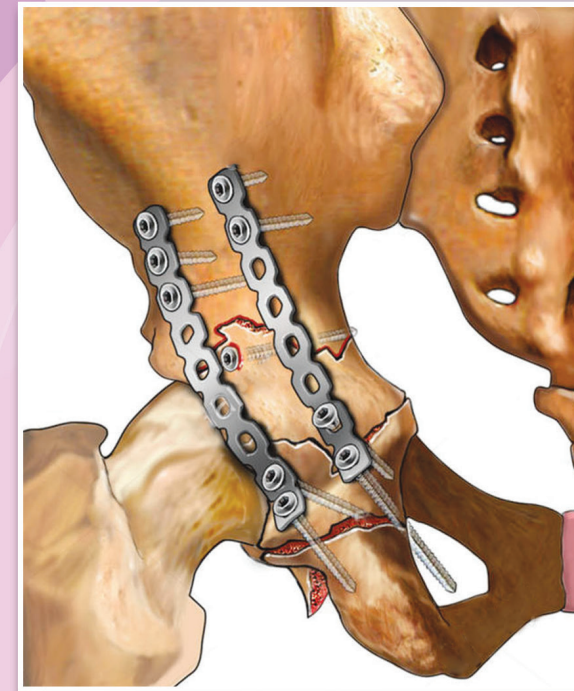
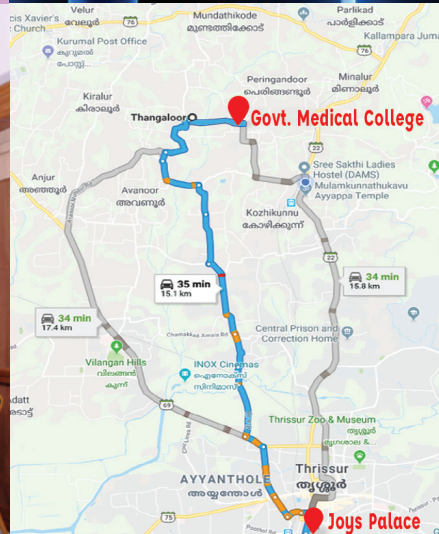
Dr. VINESH SENAN

Dept. of Orthopaedics
Govt. Medical College
Mulamkunnathukavu
Thrissur - 680 596
Tel: +91 9447739768

Email: vineshsenan@gmail.com



3rd CADAVERIC CONFERENCE & CME ON PELVIACETABULAR FRACTURES & MINIMALLY INVASIVE SPINE SURGERY



under the Aegis of
**KAPAS, TOCF, and Government
Medical College, Thrissur.**



On 17th- 19th April 2020
At Govt. Medical College Thrissur
And Joys Palace, Thrissur, Kerala

It gives us immense pleasure to invite you to the 3rd cadaveric workshop and CME on pelviacetabular fractures and endoscopic spine surgery to be held in Thrissur, Kerala on 17th- 19th April 2020.

After the successful completion of two conferences and repeated requests by the delegates to have a more detailed hands on conference we have extended the conference to three days so that we can have a more engaging sessions

This time we are giving hands on training with **AO** implants and a one on **one session with Dr. Ramesh Sen for one full day** to train you in performing these complicated surgeries using the best implants, AO techniques and instrumentation from across the world. We have a Cadaveric Fixation session also

We plan to show case new instrument, implants and Orthosis designed by the best surgeons across the world, which will make doing these complicated fractures easier to do

We are also having a **cadaveric workshop on Endoscopic Spine surgery and minimally invasive spine surgery first of its type** to train you on doing this surgery easily & to make you a complete pelvic surgeon.

The number of cadaveric participants are **limited** and **given on first come first serve basis**. Kindly book your seats at the earliest to avoid missing to learn from the best. Registration for CME is compulsory for workshop. The spine endoscopy workshop is limited to 6 and includes the acetabular workshop. We have a residential package for which CME and workshop (acetabular) is included

Participate, interact and make use of this opportunity to learn personally from the experts and improve your surgical skill to become the best.

We promise to make this conference a memorable experience.

Prof. Jayaprakash
Hornary chairman

Prof. T.M. Jose
Chairman

Dr. Vinesh Senan
Secretary

Patrons

- TOS president
- TOS Secretary
- Scientific committee
- Registration
- Audio visual
- Faculty and inauguration

- Prof. Sunny Pazhayatil, Prof. Jose Francis
- Dr. Sreenath
- Dr. Simon Mathew
- Dr. Jacob, Dr. Arvind, Dr. Aswin
- Dr. Veerankutty, Dr. Nikhil, Dr. Vijay
- Dr. Subramanian, Dr. Arun Raman, Dr. Sameer
- Dr. Sherry Isaac, Dr. Adharsh, Dr. Sujay

Programme at a Glance

- Highlights of workshop
- 1st DAY
- 1) Spine endoscopy
- Types
- Basic instrumentation
- Setup of equipment
- Position of patient
- Cadaveric Session/bone model
- Technique
- Tips
- How the experts do it
- Cadaveric Session/bone model

- Acetabular Fractures
- Anatomy
- Classification
- Approaches
- 1) Iliofemoral approach 2) Iliioinguinal approach
- 3) modified stopp approach
- 4) Kocher Langenbeck approach
- Cadaveric Session/bone model
- Post lunch
- Radiology and C-arm positioning
- Reduction Technique
- Implantation and instrumentation
- Cadaveric session/bone model session



Prof. Jayaprakash C.
Honorary Chairman



Prof. Jose T.M
Organizing Chairman



Dr. Tomsee Anil Johnson
Organizing Co Chairman



Dr. Vinesh Senan
Organizing Secretary

Dr. Jyothish
Organizing Co Secretary

- 2nd day
- Advanced acetabular workshop
- Anterior Fixation on cadavers
- Posterior fixation on cadavers
- percutaneous screw fixation
- THR on acetabular fractures with cage
- 2) Pelvis
- Anatomy
- Classification
- Approaches
- Radiology and C-arm positioning
- Reduction techniques
- Implantation and instrumentation
- Cadaveric session/ bone models
- Post Lunch
- External fixation
- Symphyseal Plating
- Sacroiliac plating anterior/posterior
- Percutaneous sacroiliac screw fixation
- Cadaveric session/bone model session

- 3rd day
- Highlights on CME
- Classification of acetabular fractures
- Investigations and radiology
- when to conserve/operate?
- Preoperative planning
- How the experts do it ?
- 1) Anterior columns fractures
- 2) Posterior columns fractures
- 3) Both columns fractures
- 4) T type fractures and associated fractures
- How the experts manage the complications?
- Total hip replacement as a treatment?
- Post lunch
- Spine endoscopy - newer advances and tips
- Classification of pelvic fractures
- how the experts manage these fractures?
- 1)Primary management
- 2) Sacroiliac joint - anterior vs posterior
- 3) Public Symphyseal - superior vs anterior
- 4) public ramus - operative vs non operative
- X-ray discussion
- Registration

Expected AO and National Faculty



Dr. Ramesh Sen

Dr. Dilip Patel
Dr. Pradeep Kothadia

Dr. Papanacherry
Dr. Tony Kavalakkatt

Dr. Ashok Ramakrishnan
Dr. Ranjith Unnikrishnan

Registration

RESIDENTIAL PACKAGE TWIN SHARING 3 days & 2 nights	INCLUDES WORKSHOP, (Acetabular) CME & Accommodation and transport to venue		20000		
	Basic Workshop (Acetabular)	Advanced Workshop (Acetabular)	MIS Spine +Acetabular Workshop	CME	Spot CME
PG student	4000	4000	12000	500	1000
Member	4000	4000	12000	1000	1500
Nonmember	4000	4000	12000	1500	2000

CME REGISTRATION IS COMPULSORY FOR WORKSHOP

WORKSHOP seats is limited and will be allotted on first come first serve basis
Registration form and payment can be done through credit/debit/ netbanking online
at <https://www.onlinesbi.com/sbicollect/icollecthome.htm?corpID=880403>

Or cash payment at your local SBI bank through SBI Collect
Bank Transfer Beneficiary: PELVIACETABULAR CME **Bank:** STATE BANK OF INDIA
Branch: KUHAS BRANCH, THRISSUR **Account:** 37494688158 **IFS CODE:** SBIN0014682
Swift code: SBININBB401
At Par Cheque/DD favoring "PELVIACETABULAR CME" payable at
State Bank of India, Kuhas Branch, Thrissur.